

RAPPAPORT

HEIGHTS CENTER
333 Hawaii Avenue
NE, Washington, DC

2,177 SF of Second Floor Retail/Office Space Available



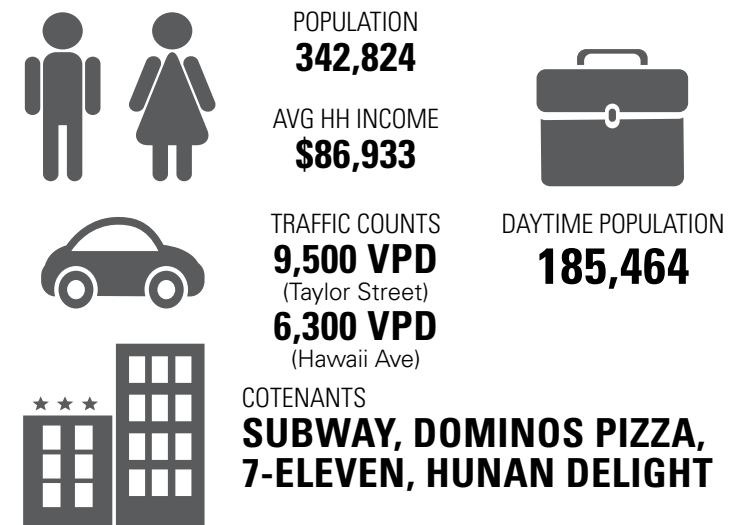
RAPPAPORT

HEIGHTS CENTER
333 Hawaii Avenue
NE, Washington, DC

2,177 SF of Second Floor Retail/Office Space Available



STATISTICAL SNAPSHOT 3-MILE RADIUS, 2014 DEMOS



HEIGHTS CENTER FACTS AT-A-GLANCE

- Highly visible neighborhood center on the corner of Hawaii Avenue and Taylor Street in NE Washington, DC
- 9,500 vehicles passing daily along Taylor Street
- Located adjacent to Catholic University of America (6,838 Students)
- One block away from Providence Hospital and three blocks north of the Veteran's Affairs Medical Center
- Exterior and pylon signage available
- Building is secured 24/7
- Elevator access to the 2nd floor

DEMOGRAPHICS (2014)	1 MILE	3 MILES	5 MILES
POPULATION	26,873	342,824	767,012
AVG HH INCOME	\$69,221	\$86,933	\$103,112
EMPLOYEES	33,169	185,464	765,106

SITE FACTS
SPACE: 2,177 SF Second Floor
TRAFFIC COUNTS: 9,500 VPD (Taylor Street) 6,300 (Hawaii Ave.)

CONTACT:
Bill Dickinson
bdickinson@rappaportco.com
(T) 703.310.6983
Melissa Webb
mwebb@rappaportco.com
(T) 571.382.1227
Michael Howard
mhoward@rappaportco.com
(T) 571.382.1219
Kyle Gamber
kgamber@rappaportco.com
(T) 571.382.1216

